

## EXPOSÉ

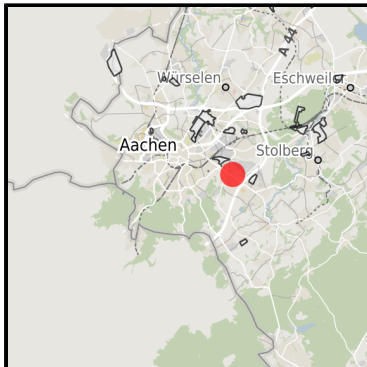
### Gewerbehof an der Trierer Straße, eh. CMC Gelände

Ort: Aachen

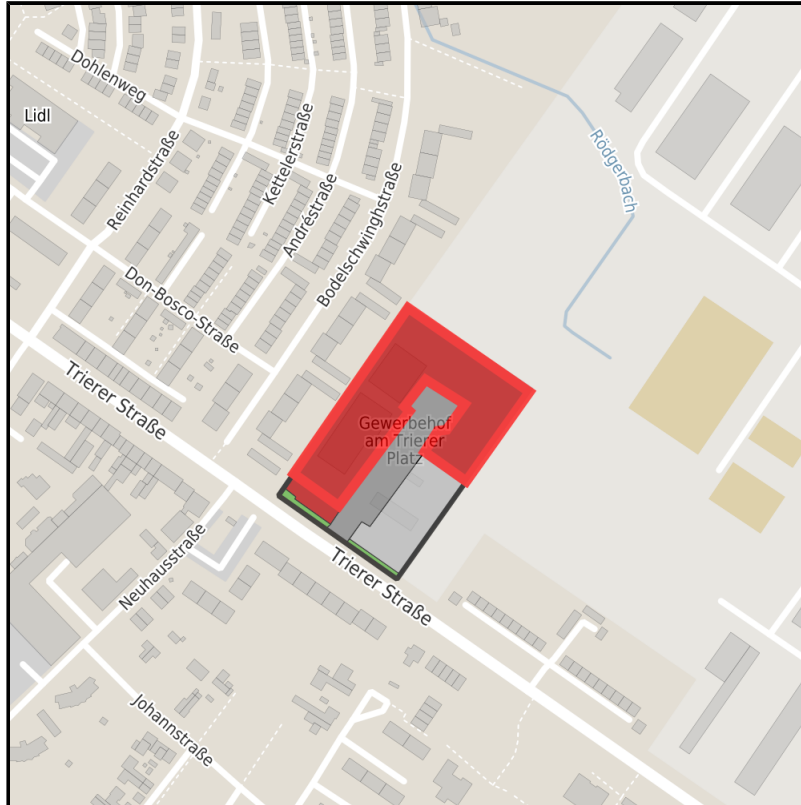
[www.germansite.de](http://www.germansite.de)



Regional overview



Municipal overview



Detail view

### Parcel

Area size	10,000 m <sup>2</sup>
Availability	Immediately available area
Area designation	Commercial zone
Divisible	Yes
24h operation	No

## EXPOSÉ

**Gewerbehof an der Trierer Straße, eh. CMC Gelände**

**Ort: Aachen**

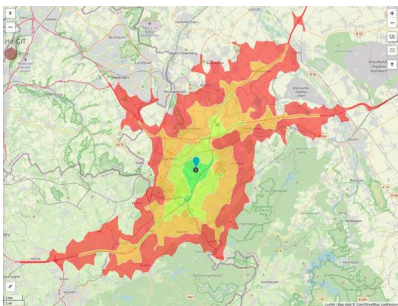
### Details on commercial zone

Area type

GE / MI

### Links

<https://www.gistra.de>



Erreichbarkeit in 20 Minuten: 773.000  
Einwohner

### Transport infrastructure

Freeway

A44

0.7 km

Airport

Maastricht-Aachen

50 km

## EXPOSÉ

**Gewerbehof an der Trierer Straße, eh. CMC Gelände**

**Ort: Aachen**

[www.germansite.de](http://www.germansite.de)

### Information about Aachen

Aachen's successful economy is indicated by the number of high-tech companies within the region. It would be difficult to find such a concentration and variety of technical and scientific potential in any other region of Europe. Research and instruction at the highest level are provided by five centres of higher education, including the world famous RWTH Aachen University. In addition Aachen has four Fraunhofer Institutes and the largest university clinic in Europe.



## EXPOSÉ

**Gewerbefhof an der Trierer Straße, eh. CMC Gelände**

**Ort: Aachen**

### Contact person

Henrik Scholz

Landmarken AG

Germany

+49 (0)241/18 95-131

+49 (0)241/18 95-199

[hscholz@landmarken-ag.de](mailto:hscholz@landmarken-ag.de)

<http://www.landmarken-ag.de>

In cooperation with:



**Aachener Gesellschaft für Technologietransfer und Innovation AGIT mbH**

Frank Leisten

+49(0)241 475773-50

[f.leisten@agit.de](mailto:f.leisten@agit.de)

<http://www.agit.de>